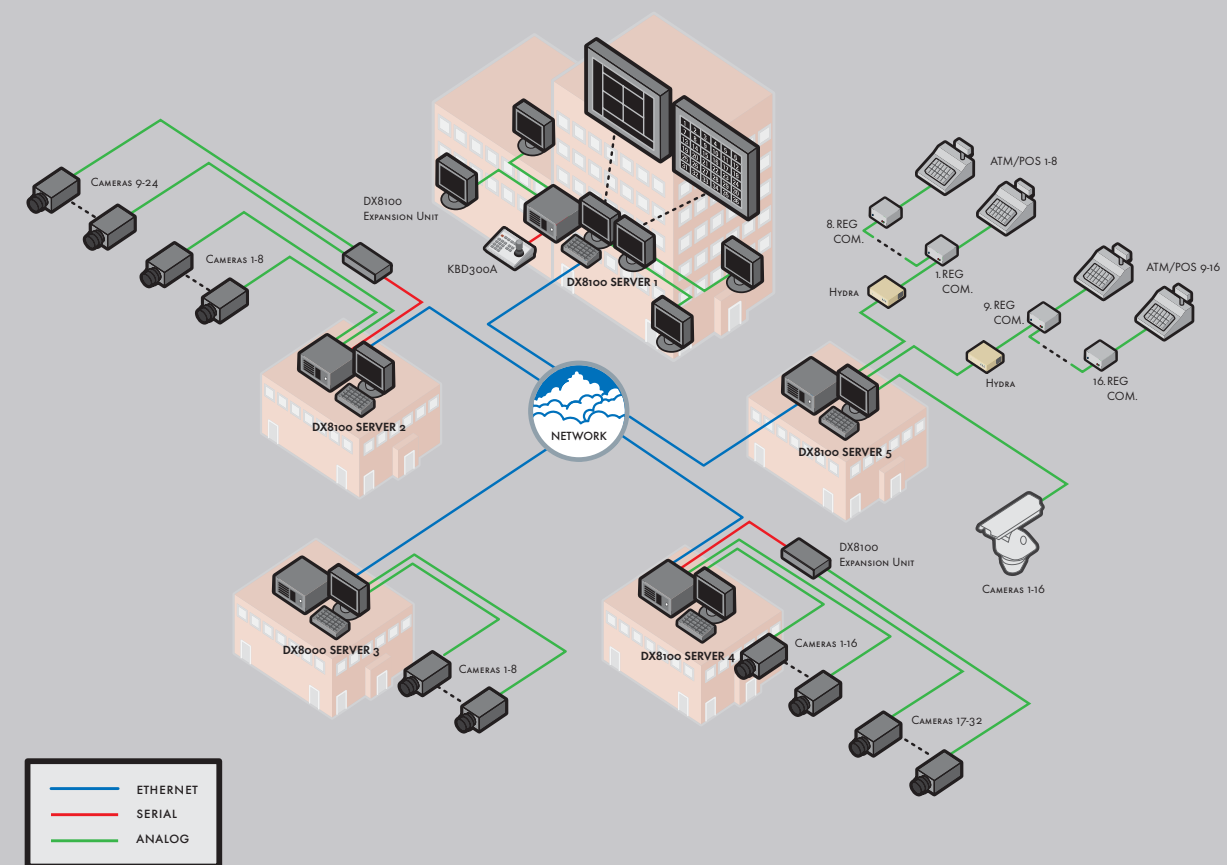
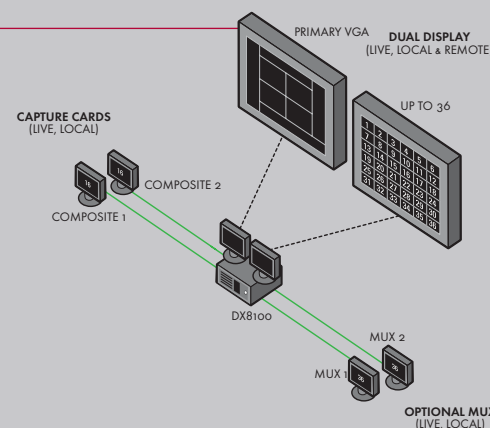


Security professionals will enjoy the familiar look, feel and control of DX8100 v1.2 systems. With easy navigation through camera favorites, optional analog keyboard control, support for up to six monitors, connectivity to up to five servers and 160 cameras, and easy integration to external security applications, DX8100 v1.2 is the centerpiece for professional security systems.



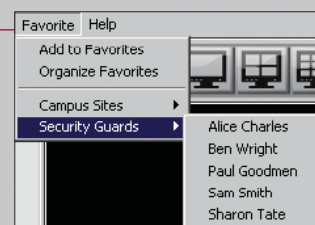
EXPANDED VIDEO DISPLAY OPTIONS

DX8100 continues to lead the way in video output flexibility. Dual-Display doubles previous capacity with the ability to view up to 72 cameras simultaneously. Additional display options provide for live and/or playback video on up to four displays for DX8108 and DX8116 systems and up to six displays on DX8124 and DX8132 systems. With DX8100 v1.2 you can meet every video output requirement concurrently: Public View, Manager's Station for critical video, Administrative and Search display, Multiplexed output, and Sequence Monitors.



CAMERA VIEW FAVORITES

With DX8100 v1.2 Camera View Favorites, users can set up and customize a variety of views containing up to 36 cameras from up to 100 different servers. Quick and easy navigation of their security environment is now as easy as a few application clicks.



EXTENSIVE VIEW SCREEN SELECTIONS

Servers and clients can take advantage of DX8100's unique server-to-server functionality and the ability to view 32 cameras from any of five servers for up to 160 cameras. DX8100 display choices include both 5x5 and 6x6 screens as well as several split views. These extensive screen selections, combined with Camera View Favorites, let security professionals quickly and easily navigate all cameras and servers, ensuring complete surveillance coverage.



ADDITIONAL DX8100 v1.2 FEATURES

- 10/100/1000 Gigabit Ethernet Port
- Network Time Protocol (NTP) Server Compatible
- 8, 16, 24 or 32 Video Channels with Auto Termination
- KBD300A Keyboard Support for Camera Selection and PTZ Control
- Optional Audio Inputs For Every Video Channel
- Continuous, Motion Detection, Alarm, ATM/POS and Scheduled Recording
- Pelco and Third-Party Dome Support
- Network Bandwidth Throttling 128Kb to 10Mb
- Pre-Motion and Pre-Alarm Recording
- Digital Zoom on Playback



PELCO INC. WORLDWIDE HEADQUARTERS
3500 PELCO WAY
CLOVIS, CALIFORNIA 93612 USA

(800) 289-9100
(800) 289-9150 FAX

(559) 292-1981 INTERNATIONAL
(559) 348-1120 INTERNATIONAL FAX

PELCO.COM

WORLDWIDE LOCATIONS:

- AUSTRALIA
- CANADA
- FINLAND
- FRANCE
- GERMANY
- ITALY
- MACAU
- THE NETHERLANDS
- RUSSIA
- SINGAPORE
- SOUTH AFRICA
- SPAIN
- SWEDEN
- UNITED ARAB EMIRATES
- UNITED KINGDOM
- UNITED STATES

PELCO, THE PELCO LOGOS, AND COAXITRON ARE EITHER TRADEMARKS OR FEDERALLY REGISTERED TRADEMARKS OF PELCO.

WINDOWS IS A REGISTERED TRADEMARK OF MICROSOFT CORPORATION.

©2007 PELCO.

C5028-B-02/08

DX8100 v1.2 DIGITAL VIDEO RECORDER



PROTECTING

PEOPLE AND PROPERTY IN A MILLION LOCATIONS WORLDWIDE



PELCO DX8100 v1.2 SERIES DIGITAL VIDEO RECORDER



DX8100 v1.2 CONTINUES TO DELIVER THE FEATURE-RICH PERFORMANCE YOU'VE COME TO EXPECT, WHILE ADDING NEW MARKET-LEADING CAPABILITIES. WITH ADDED FUNCTIONALITY AND ADAPTABILITY FOR A DEMANDING MARKET, DX8100 v1.2 REMAINS THE DVR OF CHOICE FOR SECURITY PROFESSIONALS.

DX8100 v1.2 SYSTEMS SURPASS ANY COMPETITIVE DIGITAL VIDEO RECORDER IN THE MAINSTREAM VIDEO SECURITY MARKET PLACE, FEATURING EXCEPTIONAL SEARCH FEATURES FOR FAST RESULTS, EXPANDED VIDEO DISPLAY OPTIONS THAT CREATE A VIRTUAL MATRIX DISPLAY, ROBUST INTERNAL AND EXTERNAL STORAGE CAPACITY WITH RAID OPTIONS, INTEGRATION TO ACCESS CONTROL, INTELLIGENT VIDEO, ATM/POS RECORDING, AND MORE. NOW MORE THAN EVER DX8100 v1.2 SYSTEMS MEET THE MOST DEMANDING VIDEO SECURITY RECORDING REQUIREMENTS.

PELCO DX8100 v1.2. IT JUST KEEPS GETTING BETTER.

THE CHOICE FOR PROFESSIONAL SECURITY

The DX8100 v1.2 Series DVR is Pelco's choice for professional digital video recording, featuring powerful search capabilities and extensive display options, along with robust networking and integration capabilities. Designed for users who demand a DVR that is rich with features but easy-to-operate, DX8100 v1.2 delivers high-quality images and immense storage capacity at a competitive price.

DUAL-DISPLAY

No other DVR offers the display capabilities of DX8100 v1.2 with the ability to view up to 72 cameras at one time. With Server Dual-Display, operators can search video or perform administrative functions on their primary VGA display while simultaneously viewing live video on a second VGA display. A switch-selectable display card alternatively supports a composite monitor, great for placement on a manager's desk for viewing critical cameras. Now with graphics acceleration options for 24- and 32-channel systems DX8100 v1.2 supports up to six video display outputs to create a true virtual matrix environment.



SYSTEM HEALTH CHECK MONITORING

When security is on the line, professionals require recording solutions with dependable performance. That is why DX8100 v1.2 includes the new System Health Check Monitoring system. Administrators can set thresholds for a variety of functions and receive an on screen alert when levels drop below or exceed acceptable measures. This new feature delivers peace of mind by helping to ensure maximum system uptime for the most critical video security needs.



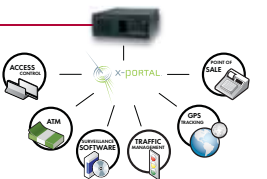
EXPANDED ATM/POS SUPPORT

DX8100 v1.2 allows users to turn critical ATM and POS data into searchable fields for instant retrieval of transaction-specific video. This capability helps detect and prevent shrinkage, improve process management and more readily investigate exceptions. With expanded support for up to 16 devices per DVR, DX8100 v1.2 has data integration capabilities to meet any application need from small local shops and branches, to multiple building campuses.



SYSTEMS INTEGRATION

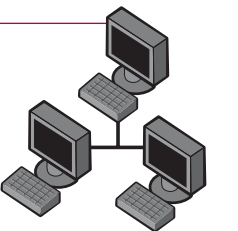
The industry's most powerful family of Digital Video Recorders is also the most flexible. Whether integrating with far-reaching Command and Control Centers, or localized Point of Sale transaction data, the Pelco DX8100 Series DVR and our many integration partners have the solutions to make it work.



SYSTEMIZATION CAPABILITY

Expand your security system as requirements change or grow. DX8100 v1.2 systems provide extensive server-to-server and multicasting capabilities permitting multiple connection options.

- View Up to 100 Servers With a Single Client
- Simultaneously View One Server From Five Clients
- Connect Five Servers in a Server-to-Server Configuration
- View Live Video in a Multicast Local Area Network from Unlimited Web Clients
- Easily Integrate DX8100 Systems into Existing DX8000 Systems



16-CHANNEL EXPANSION UNIT

Adding security cameras is quick and easy with the DX8100 16-Channel Expansion Box. As security needs grow, preserve investments at a lower cost per channel by expanding a DX8108 or DX8116 DVR to a 24- or 32-channel system with this optional unit. Graphics acceleration for all models is available through optional mux cards.



FASTER RECORDING SPEED

Record more images per second (ips) than ever before with the DX8100 v1.2 DVR. Rapid recording rates enable the system to be programmed by channel at up to 480ips in CIF, 240ips in 2CIF, or 120ips in 4CIF mode.



MULTI-EVENT RECORDING

Multi-Event Recording with DX8100 v1.2 Series DVRs provides for a full-coverage security environment while saving room on valuable hard drives. Separate recording rates can be set for an overlapping schedule of continuous, motion detection, alarm and ATM/POS event recording for every camera in the system. For example, a camera positioned to continuously record in a hallway may be programmed to record at two images per second (ips) and on motion alarm increase to 15 ips. The DX8100 v1.2 also protects privacy with a global data retention time limit, which allows the DVR to automatically delete video after a specified amount of time.

